

ProView

by Tastybrands



Product Guide/New Item Brochure

SY24-25

July 2024

PARTNER WITH THE K-12 CHICKEN EXPERTS

ProView by Tasty Brands is committed to delivering the highest-quality chicken products to feed America’s future.

Our Mission

At ProView by Tasty Brands, we really love chicken, and we know how to serve it up right. Our mission is to be a leader in providing the finest, nutritious, fully-cooked chicken products for K-12 school nutrition programs across the nation.



WHOLE MUSCLE CHICKEN FILLETS

Whole muscle chicken breast meat for a high-quality, restaurant-style fillet.



Whole Grain Breaded Savory Fillet
#60715



Whole Grain Breaded Dill Flavored Fillet
#60615



Whole Grain Breaded Savory Fillet with Foil Bags
#60815



Grilled Chicken Breast Fillet
#62006

Item #	Description	CN M/MA	CN Oz Eq Gr	Serving Size	Portion Size (oz)	Servings/ Case	Case Pack
60715	Whole Grain Breaded Savory Fillet	2.25	1.25	1	4.0	80	4/5 lb
62615*	NAE Whole Grain Breaded Savory Fillet	2.25	1.25	1	4.0	80	4/5 lb
60325	Whole Grain Breaded Spicy Fillet	2.00	1.50	1	4.0	80	4/5 lb
60915	Whole Grain Breaded Savory Breakfast Fillet	1.00	0.50	1	2.0	160	4/5 lb
60615	Whole Grain Breaded Dill Flavored Fillet	2.25	1.25	1	4.0	80	4/5 lb
60625*	NAE Whole Grain Breaded Spicy Fillet	2.00	1.50	1	4.0	80	4/5 lb
60438	Non WG Breaded "Louisiana Style" Fillet	2.00	-	1	4.0	80	4/5 lb
60738*	NAE Non WG Breaded "Louisiana Style" Fillet	2.00	-	1	4.0	80	4/5 lb
60815	Whole Grain Breaded Savory Fillet with Foil Bags	2.25	1.25	1	4.0	80	4/5 lb
60415	Whole Grain Breaded Savory Breakfast Fillet with Foil Bags	1.00	0.50	1	4.0	160	4/5 lb
60015	Whole Grain Breaded Dill Flavored Fillet with Foil Bags	2.25	1.25	1	4.0	80	4/5 lb
60425	Whole Grain Breaded Spicy Fillet with Foil Bags	2.00	1.50	1	4.0	80	4/5 lb
62006	Grilled Chicken Breast Fillet	3.00	-	1	4.0	48	2/6 lb

* See page 10 for a full list of NAE Options

WHOLE MUSCLE CHUNKS AND TENDERS

Whole muscle chicken breast meat perfect for dipping, in wraps, and more!



Whole Grain Breaded Dill Chunks
#64015



Whole Grain Breaded Buffalo Glazed Chunks
#64230



Whole Grain Breaded Asian Style Glazed Chunks
#64130



Boneless Roasted Chicken Bites
#40011

Item #	Description	CN M/MA	CN Oz Eq Gr	Serving Size	Portion Size (oz)	Servings/Case	Case Pack
64630	Whole Grain Breaded Breast Chunks	2.00	1.25	4	3.5	90	4/5 lb
64015	Whole Grain Breaded Dill Chunks	2.00	1.00	4	3.2	100	4/5 lb
64230	Whole Grain Breaded Buffalo Glazed Chunks	2.00	1.25	4	4.4	72	4/5 lb
64130	Whole Grain Breaded Asian Style Breast Glazed Chunks	2.00	1.25	4	4.0	80	4/5 lb
67630*	NAE Whole Grain Breaded Breast Chunks	2.00	1.50	4	4.4	72	4/5 lb
40011	Boneless Roasted Chicken Bites	2.00	-	6	3.0	160	6/5 lb
63050	Whole Grain Breaded Tender Fritter	2.00	1.75	3	4.8	59	4/5 lb
63250*	NAE Whole Grain Breaded Tender Fritter	2.00	1.75	3	4.8	100	4/5 lb

* See page 10 for a full list of NAE Options

BONE-IN WINGS & DRUMSTICKS

Change up your chicken menu with juicy, bone-in options.



**Fully Cooked
Roasted Wings**
#34007



**Fully Cooked, Oven Roasted
Chicken Drumsticks**
#34009

Item #	Description	CN M/MA	CN Oz Eq Gr	Serving Size	Portion Size (oz)	Servings/ Case	Case Pack
34007	Fully Cooked Roasted Wings	2.00	-	3	4.5	106	6/5 lb
34006*	NAE Fully Cooked Roasted Wings	2.00	-	3	4.5	142	8/5 lb
34009	Fully Cooked, Oven Roasted Chicken Drumsticks	2.50	-	1	5.2	80-128	6/5 lb

* See page 10 for a full list of NAE Options

FORMED PATTIES, NUGGETS AND FRITTERS

Made with ground chicken breast meat, these formed options provide consistent portions and great quality.



**Whole Grain
Breaded Patty**
#50415



**Whole Grain
Breaded Nugget**
#40015



**Whole Grain Breaded
Popcorn Chicken**
#43015

Item #	Description	CN M/MA	CN Oz Eq Gr	Serving Size	Portion Size (oz)	Servings/ Case	Case Pack
50415	Whole Grain Breaded Patty	2.00	1.00	1	3.0	106	4/5 lb
50515	Whole Grain Breaded Breakfast Patty	1.00	0.50	1	1.6	200	4/5 lb
50011	Whole Grain Breaded Spicy Patty	2.00	1.00	1	3.0	106	1/20 lb
59400	Chicken Sausage Patty	1.00	-	1	1.5	213	4/5 lb
55000	Unbreaded "Grilled" Patty	2.00	-	1	2.5	64	2/5 lb
46015	Whole Grain Breaded Chicken Tender Fritter	2.00	1.00	3	3.0	106	4/5 lb
40015	Whole Grain Breaded Nugget	2.00	1.00	5	3.0	106	1/20 lb
43015	Whole Grain Breaded Popcorn Chicken	2.00	1.00	10	3.0	106	1/20 lb

CORN DOGS & PANCAKE BITES

Crispy coated chicken and pepperoni franks, perfect for dipping!



**Whole Grain
Mini Corn Dog**
#64010



**Whole Grain Mini Maple
Pancake Chicken Bites**
#64014



**Whole Grain Mini
Pepperoni Corn Dogs**
#64018

Item #	Description	CN M/MA	CN Oz Eq Gr	Serving Size	Portion Size (oz)	Servings/ Case	Case Pack
64009	Whole Grain Mini Corn Dogs	2.00	2.00	6	4.02	120	6/5 lb
64010	Whole Grain Mini Corn Dogs	2.00	2.00	6	4.02	40	2/5 lb
64011	Whole Grain Mini Corn Dogs Nitrate/Nitrite Free	2.00	2.00	6	4.02	120	6/5 lb
64014	Whole Grain Mini Maple Pancake Chicken Bites	1.25	1.25	4	2.68	57	2/5 lb
64018	Whole Grain Mini Pepperoni Corn Dogs	2.00	2.00	6	4.02	120	6/5 lb
64019*	Whole Grain Mini Corn Dogs (Chicken Thigh)	2.00	2.00	6	4.02	119	6/5 lb

* See page 9 for a full list of dark meat options

ROTISSERIE, STRIPS, AND DICED CHICKEN

Speed scratch made simple with our fully-cooked rotisserie chicken, chicken strips, and diced chicken.



Rotisserie Pulled Chicken
#10404



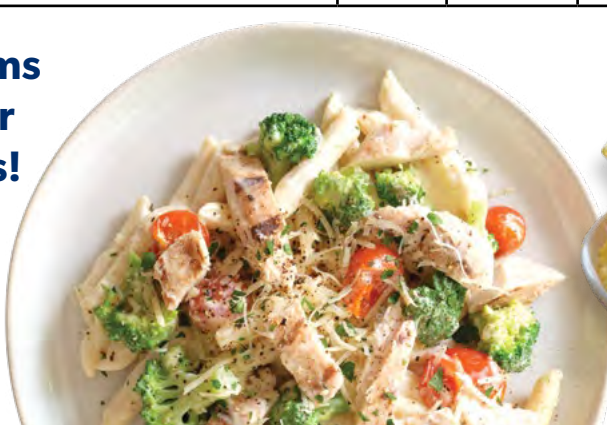
Non Marinated Diced Chicken
#28031



Fajita Chicken Breast Strips - Seasoned
#28001

Item #	Description	CN M/MA	CN Oz Eq Gr	Serving Size	Portion Size (oz)	Servings/ Case	Case Pack
10404	Rotisserie Pulled Chicken	2.00	-	1	2.0	192	8/3 lb
28031	Non Marinated Diced Chicken	2.00	-	1	2.5	192	1/30 lb
28800	Marinated Diced Chicken Breast	2.00	-	1	2.5	64	2/5 lb
28002	Grilled Chicken Strips - Unseasoned	2.00	-	1	2.5	64	2/5 lb
28001	Fajita Chicken Breast Strips - Seasoned	2.00	-	1	2.5	64	2/5 lb

The perfect items to add into your favorite recipes!



Tuscan Chicken Pasta



Buffalo Chicken Dip

ROLLS **NEW**

Make the most popular sandwiches in your school!



CONVENIENTLY
PACKAGED
IN OVENABLE
TRAYS!



**WG Sister Schubert's
Parker House Style Roll
#24300**

Item #	Description	CN M/MA	CN Oz Eq Gr	Serving Size	Portion Size (oz)	Servings/ Case	Case Pack
24300	WG Sister Schubert's Parker House Style Roll	-	.75	1	.80	144	6 Trays/ 24 Rolls

Ultimate in Versatility!



**#40011
Boneless Roasted
Chicken Bites**

**#64015
WG Lightly
Breaded
Dill Chunks**

**#64230
WG Breaded
Buffalo Style
Glazed Chunks**

**#64130
WG Breaded
Asian Style Glazed
Breast Chunks**

**#64630
WG Breaded
Breast Chunks**

DARK MEAT OPTIONS



Juicier and more flavorful dark meat chicken to increase meal satisfaction and consumption.



Grilled Chopped Chipotle Seasoned Chicken
#28802



Whole Grain Mini Corn Dogs (Chicken Thighs)
#64019



Whole Grain Tempura Battered Chicken Chunks
#64640

Item #	Description	CN M/MA	CN Oz Eq Gr	Serving Size	Portion Size (oz)	Servings/ Case	Case Pack
28802	Grilled Chopped Chipotle Seasoned Chicken	2.00	-	1	3.00	64	2/20 lb
64019*	WG Mini Corn Dogs (Chicken Thigh)	2.00	2.00	6	4.02	119	6/5 lb
64640	WG Tempura Battered Chicken Chunks	2.00	1.00	7	4.59	69	4/5 lb

Tempura Chicken with Hunan Orange Sauce



Chipotle Chicken Tacos

NO ANTIBIOTICS... EVER!

The delicious, high-quality chicken you expect, made with no antibiotics ever.



**NAE Whole Grain
Breaded Breast Bite**
#67630



**NAE Fully Cooked
Roasted Wings**
#34006



**NAE Whole Grain
Breaded Tender Fritter**
#63250

Item #	Description	Serving Size	Portion Size (oz)	Servings/Case	Case Pack
62615	NAE Whole Grain Breaded Savory Fillet	1	4.0	80	4/5 lb
60625	NAE Whole Grain Breaded Spicy Fillet	1	4.0	80	4/5 lb
67630	NAE Whole Grain Breaded Breast Chunks	4	4.4	72	4/5 lb
60738	NAE Non WG Breaded "Louisiana Style" Fillet	1	4.0	80	4/5 lb
34006	NAE Fully Cooked Roasted Wings	3	4.5	142	8/5 lb
63250	NAE Whole Grain Breaded Tender Fritter	3	4.8	100	4/5 lb

GET INSPIRED

Spark intrigue and drive meal participation with enticing
MENU CONCEPTS!



CHICKEN AND WAFFLES

- WITH PEACH JALAPEÑO COMPOTE -

FEATURING : "LIGHTLY BREADED" DILL BITE | #64015
ONE PORTION PROVIDES: 2 M/MA • 2 ½ OZ EQ GRAIN • ½ CUP FRUIT

SPICY CHICKEN SANDWICH

FEATURING : SPICY FILLET, 4 OZ | #60325



- BUFFALO -

CHICKEN DIP

FEATURING : PULLED ROTISSERIE CHICKEN | #10404
ONE PORTION PROVIDES: 2 M/MA • 2 OZ EQ GRAIN



- CHICKEN SAUSAGE -

BREAKFAST BURRITO

FEATURING : CHICKEN SAUSAGE PATTY | #59400
ONE PORTION PROVIDES: 2 M/MA • 2 OZ EQ GRAIN • ¼ CUP VEG (STARCHY)



NUTRITIONAL FACTS

Item #	Product Description	CN: m/ma	CN: oz eq gr	Srvg Size	Srvg/ Case	Portion Size (oz)	Cal	Total Fat (g)	Sat Fat (g)	Trans Fat (g)	Chol (mg)	Sodium (mg)	Total Carb (g)	Dietary Fiber (g)	Sugars (g)	Prot (g)
Whole Muscle Chicken																
60715	WG Breaded Savory Fillet	2.25	1.25	1	80	4.00	210	7	1	0	50	690	19	1	2	19
60615	WG Breaded Dill Flavored Fillet	2.25	1.25	1	80	4.00	210	7	1	0	50	620	19	1	2	19
60325	WG Breaded Spicy Fillet	2.00	1.50	1	80	4.00	210	7	1	0	50	530	19	2	0	20
60915	WG Breaded Savory Breakfast Fillet	1.00	0.50	1	160	2.00	110	3.5	0.5	0	25	350	10	1	1	10
63050	WG Breaded Tender Fritter	2.00	1.75	3	59	4.80	270	8	1.5	0	50	1070	30	3	0	21
64015	WG Breaded Dill Chunks	2.00	1.00	4	80	3.20	170	5	1	0	45	500	14	1	2	17
64630	WG Breaded Breast Chunks	2.00	1.25	4	90	3.50	180	6	1	0	45	530	15	1	0	17
64130	WG Breaded Breast Chunks Glazed Asian Style	2.00	1.25	4	80	4.00	210	6	1	0	50	500	19	0	0	19
64230	WG Breaded Breast Chunks Buffalo Style	2.00	1.25	4	72	4.40	240	7	1	0	45	750	24	2	0	20
60438	NON WG Breaded "Louisiana Style" Fillet	2.00	-	1	80	4.00	210	6	1	0	50	590	19	1	0	18
60425	WG Breaded Spicy Fillet w/ Foil Bag	2.00	1.50	1	80	4.00	210	7	1	0	50	530	19	2	0	20
60815	WG Breaded Savory Fillet w/ Foil Bag	2.25	1.25	1	80	4.00	210	7	1	0	50	690	19	1	2	19
60015	WG Breaded Dill Flavored Fillet w/ Foil Bag	2.25	1.25	1	80	4.00	210	7	1	0	50	620	19	1	2	19
60415	WG Breaded Savory Breakfast Fillet w/ Foil Bag	1.00	0.50	1	160	2.00	110	3.5	0.5	0	25	350	10	1	1	10
62006	Grilled Chicken Breast Fillets	3.00	-	1	48	4.00	140	2.5	1	0	70	680	3	0	0	25
40011	Boneless Roasted Chicken Bites	2.00	-	6	160	3.00	100	2	0	0	55	560	2	0	1	17
NAE Chicken																
67630	NAE WG Breaded Breast Chunks	2.00	1.50	4	72	4.40	220	6	1	0	55	500	19	0	0	20
63250	NAE WG Breaded Tender Fritter	2.00	1.75	3	66	4.80	270	8	1.5	0	50	1100	29	3	0	21
60625	NAE WG Breaded Spicy Fillet	2.00	1.50	1	80	4.00	220	7	1	0	50	370	19	2	0	20
62615	NAE WG Breaded Savory Fillet	2.25	1.25	1	80	4.00	210	7	1	0	50	590	19	0	2	19
60738	NAE Non WG Breaded "Louisiana Style" Fillet	2.00	-	1	80	4.00	210	6	1	0	50	590	19	1	0	18
34006	NAE Fully Cooked Roasted Wings	2.00	-	3	142	4.50	200	13	2	0	125	170	0	0	0	19
Formed Chicken																
50415	WG Breaded Patty	2.00	1.00	1	106	3.00	170	6	1.5	0	25	560	16	0	2	14
50515	WG Breaded Breakfast Patty	1.00	0.50	1	200	1.60	90	3	0.5	0	15	300	9	0	1	7
50011	WG Breaded Spicy Patty	2.00	1.00	1	106	3.00	180	6	1.5	0	25	470	16	0	1	14
59400	Chicken Sausage Patty	1.00	-	1	213	1.50	90	5	1.5	0	30	230	1	0	0	8
55000	Unbreaded "Grilled" Patty	2.00	-	1	64	2.50	110	6	0	0	10	410	0	0	0	13
40015	WG Breaded Nugget	2.00	1.00	5	106	3.00	170	6	1.5	0	25	560	16	1	2	14
43015	WG Breaded Popcorn Chicken	2.00	1.00	10	106	3.00	170	6	1.5	0	25	540	16	0	2	14
46015	WG Breaded Tender Fritter	2.00	1.00	3	106	3.00	170	6	1.5	0	25	560	16	0	2	14
Wings & Drumsticks																
34007	Fully Cooked Roasted Wings	2.00	-	3	106	4.50	200	13	2	0	125	170	0	0	0	19
34009	Oven Roasted Drumsticks	2.50	-	1	80-128	5.20	180	10	2.5	0	75	660	5	0	1	15
Strips, Diced & Rotisserie																
28800	Marinated Diced Chicken Breast	2.00	-	1	64	2.50	70	1	0	0	35	400	1	0	0	13
28031	Non Marinated Diced Chicken	2.00	-	1	192	2.50	80	1	0	0	40	160	0	0	0	15
28002	Grilled Chicken Strips - Unseasoned	2.00	-	1	64	2.50	70	1	0	0	35	400	1	0	0	13
28001	Fajita Chicken Breast Strips - Seasoned	2.00	-	1	64	2.50	70	1	0	0	35	550	2	0	0	14
10404	Rotisserie Pulled Chicken	2.00	-	1	192	2.00	60	3.5	0	0	35	250	0	0	0	12
Corn Dogs & Breakfast Bites																
64009	Mini Corn Dog WG Nuggets	2.00	2.00	6	40	4.02	250	10	2.5	0	60	350	30	3	1	10
64010	Mini Corn Dog WG Nuggets	2.00	2.00	6	40	4.02	300	15	3	0	30	420	33	1	11	10
64011	Mini Corn Dog WG Nuggets Nitrate/Nitrite Free	2.00	2.00	6	40	4.02	250	12	2.5	0	35	360	28	1	6	11
64014	WG Mini Maple Pancake Chicken Bites	1.25	1.25	4	57	2.68	170	10	2.5	0	25	520	17	0	5	9
64018	WG Mini Pepperoni Corn Dogs	2.00	2.00	6	120	4.02	250	11	2.5	0	35	620	24	0	6	13
Rolls																
24300	WG Sister Schubert's Parker House Style Rolls	-	.75	1	144	.80	80	2	1	0	5	110	13	1	2	2
Dark Meat Chicken																
28802	Grilled, Chopped Chipotle Seasoned Chicken	2.00	-	1	64	3.00	100	2.5	0	0	50	420	3	0	1	16
64019	WG Mini Corn Dogs (Chicken Thighs)	2.00	2.00	6	119	4.02	250	10	2.5	0	60	350	30	3	1	10
64640	WG Fully Cooked Tempura Battered Chicken Chunks	2.00	1.00	7	69	4.59	240	8	1.5	0	65	640	24	2	0	20

ALLERGENS

Item #	Product Description	Wheat	Milk	Egg	Soy	Sesame	Peanut	Tree Nut
Whole Muscle Chicken								
60715	WG Breaded Savory Fillet	X	X		X			
60615	WG Breaded Dill Flavored Fillet	X	X		X			
60325	WG Breaded Spicy Fillet	X	X	X	X			
60915	WG Breaded Breakfast Fillet Savory	X	X		X			
63050	WG Breaded Tender Fritter	X			X			
64015	WG Breaded Dill Chunks	X	X		X			
64630	WG Breaded Breast Chunks	X	X		X			
64130	WG Breaded Breast Chunks Glazed Asian Style	X	X		X			
64230	WG Breaded Breast Chunks Buffalo Style	X	X		X			
60438	NON WG Breaded "Louisiana Style" Fillet	X	X					
60425	WG Breaded Spicy Fillet w/ Foil Bag	X	X	X	X			
60815	WG Breaded Savory Fillet w/ Foil Bag	X	X		X			
60015	WG Breaded Dill Flavored Fillet w/ Foil Bag	X	X		X			
60415	WG Breaded Breast Fillet w/ Foil Bag	X	X		X			
62006	Grilled Chicken Breast Fillets							
40011	Boneless Roasted Chicken Bites							
NAE Chicken								
67630	NAE WG Breaded Breast Chunks	X	X					
63250	NAE WG Breaded Tender Fritter	X			X			
60625	NAE WG Breaded Spicy Fillet	X	X	X	X			
62615	NAE WG Breaded Savory Fillet	X	X		X			
60738	NAE Non WG Breaded "Louisiana Style" Fillet	X	X					
34006	NAE Fully Cooked Roasted Wings							
Formed Chicken								
50415	WG Breaded Patty	X	X		X			
50515	WG Breaded Breakfast Patty	X	X		X			
50011	WG Breaded Spicy Patty	X	X		X			
59400	Chicken Sausage Patty							
55000	Unbreaded "Grilled" Patty				X			
40015	WG Breaded Nugget	X	X		X			
43015	WG Breaded Popcorn Chicken	X	X		X			
46015	WG Breaded Tender Fritter	X	X		X			
Wings & Drumsticks								
34007	Fully Cooked Roasted Wings							
34009	Oven Roasted Drumsticks							
Strips, Diced & Rotisserie								
28800	Marinated Diced Chicken Breast							
28031	Non Marinated Diced Chicken							
28002	Grilled Chicken Strips - Unseasoned)							
28001	Fajita Chicken Breast Strips - Seasoned							
10404	Rotisserie Pulled Chicken							
Corn Dogs & Breakfast Bites								
64009	Mini Corn Dog WG Nuggets	X	X	X	X			
64010	Mini Corn Dog WG Nuggets	X	X	X	X			
64011	Mini Corn Dog WG Nuggets Nitrate/Nitrite Free	X	X	X	X			
64014	WG Mini Maple Pancake Chicken Bites	X		X				
64018	WG Mini Pepperoni Corn Dogs	X	X	X	X			
Rolls								
24300	WG Sister Schubert's Parker House Style Rolls	X	X	X				
Dark Meat Chicken								
28802	Grilled, Chopped Chipotle Seasoned Chicken							
64019	WG Mini Corn Dogs (Chicken Thighs)	X	X	X	X			
64640	WG Fully Cooked Tempura Battered Chicken Chunks	X	X		X			

For news and exciting new offerings, visit:

ProViewFoods.com

Connect with us on social!

[@ProView_Foods](https://www.instagram.com/ProView_Foods)

Follow Us On Social Media!



[@ProView Foods](https://www.facebook.com/ProViewFoods)



[@Proview_Foods](https://www.instagram.com/Proview_Foods)



ProView Foods | 6800 Jericho Tpke, Suite 100E, Syosset, NY 11791
516-938-4588 | proviewfoods.com

THANK YOU!